



CAD Integrator

Timberline® Office CAD Integrator speeds the estimating process by using a standardized language to define CAD objects and their associated attributes.

Timberline Office draws on the common information format of Industry Foundation Classes (IFCs), used to standardize CAD objects like doors, windows, walls, or HVAC ductwork. Because the objects are universal, an IFC door is always recognized as a door, regardless of which CAD software you're using. Prior to the introduction of IFCs, a door might have been represented simply by a straight line in your drawing. And, the only way to ensure the door was being properly recognized by your estimating software was to spend countless hours creating a custom interface, or link between the two systems.

A seamless link

With Timberline Office CAD Integrator, you no longer need a custom interface to transfer information from CAD drawings into a Timberline Office estimate. Estimates are generated directly from any IFC-compliant CAD software in a matter of minutes and with deadly accuracy. Eliminating manual and digitizer takeoff means increased speed and improved productivity.

Information at your fingertips

With Timberline Office, no prior experience with CAD software is necessary. In fact, estimators don't even need the software loaded on their machine. CAD Integrator automatically creates a basic schematic drawing of your project, showing key information like the placement of

walls. By clicking on an object in the drawing, you can instantly see all the associated assemblies and cost information.

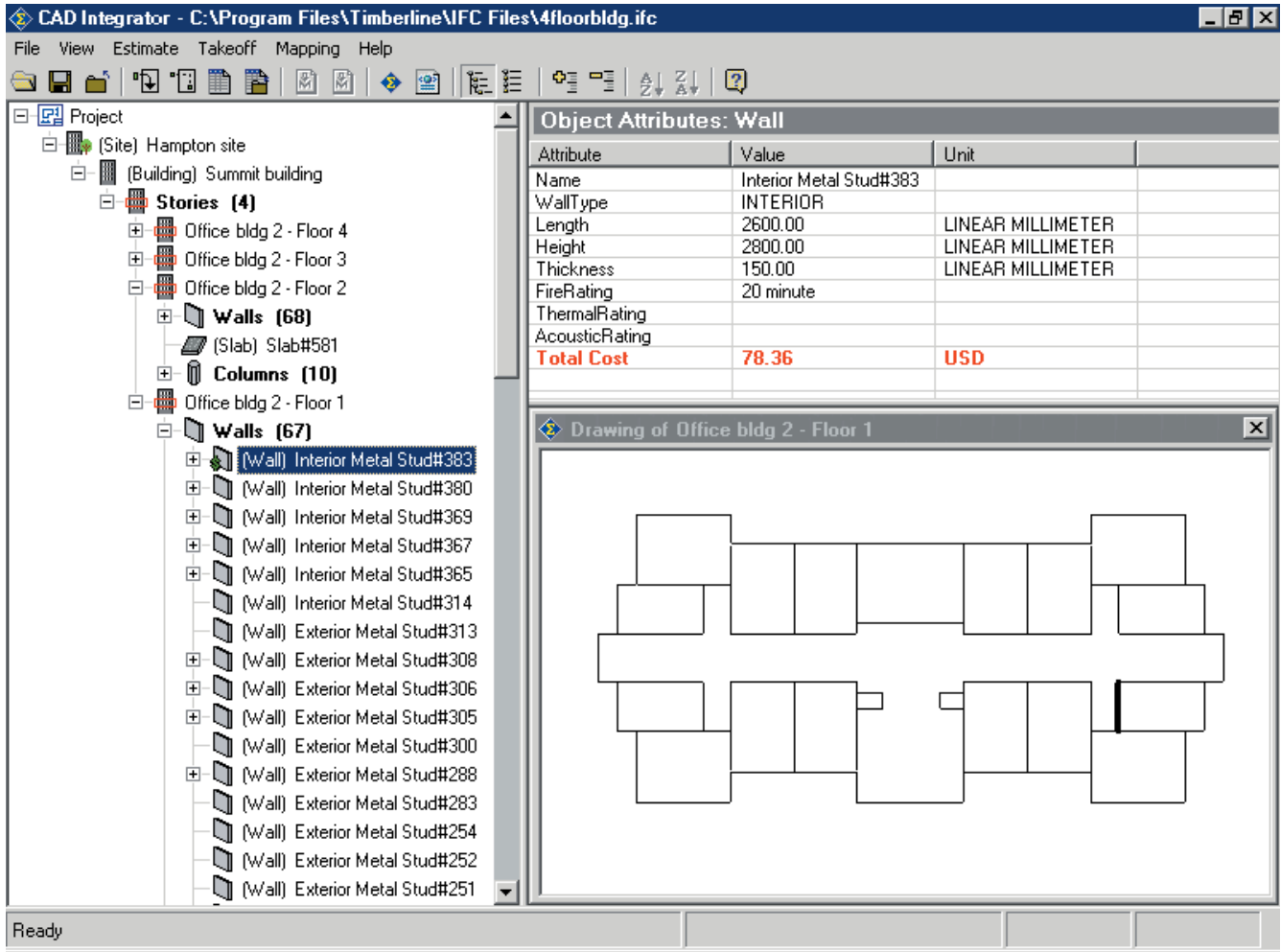
The luxury of "what-if"

What if you reduce your square footage by 10 percent? Or use masonry instead of wood siding? CAD Integrator gives you updated cost information on demand to quickly assess the costs of these and other changes. And since the Integrator streamlines takeoff of item quantities, you have more time to explore design alternatives.

Features

- Map assemblies/items and their variables to IFC CAD objects and their attributes.
- Map multiple items and assemblies to a single IFC CAD object.
- Place your own parameters and constraints on the system through built-in intelligence.
- Perform takeoff for only one CAD object, an entire group of objects, or all the objects in the IFC file.
- Highlight an object in the browser and see the same object highlighted in the drawing.
- Click on the object in the drawing and see the associated costs in the browser.
- Automatically flag items and assemblies that are incomplete.
- Instantly view which items have not yet been taken off.

CAD Integrator is a part of Timberline Office, fully integrated software created to streamline work and connect the people you depend on to build your business.



Click on an object in the drawing and instantly view all associated costs, object attributes and assembly information.